

Appendix J

Airport Layout Plan Set

NIAGARA FALLS INTERNATIONAL AIRPORT SUSTAINABLE AIRPORT MASTER PLAN



NIAGARA COUNTY
NEW YORK

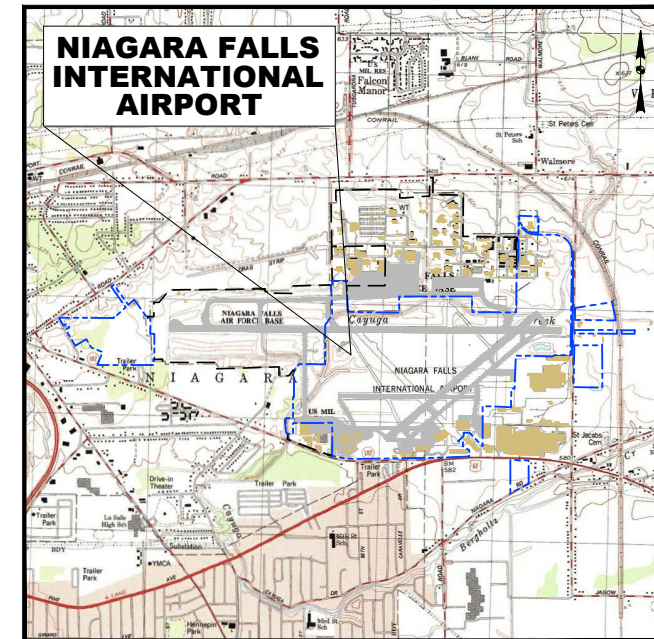
DECEMBER 2016



Location Map

DRAWING INDEX

SHEET NO.	TITLE
1	COVER SHEET
2	EXISTING AIRPORT LAYOUT
3	AIRPORT LAYOUT PLAN
4	TERMINAL AREA PLAN
5	AIRPORT AIRSPACE PLAN
6	AIRPORT AIRSPACE PLAN OUTER APPROACH SURFACES
7	RUNWAY 10L-28R EXISTING INNER APPROACH DRAWING
8	RUNWAY 10L-28R EXISTING ADAS #9 INNER APPROACH DRAWING
9	RUNWAY 10L-28R PROPOSED INNER APPROACH DRAWING
10	RUNWAY 10L-28R PROPOSED ADAS #9 INNER APPROACH DRAWING
11	RUNWAY 6-24 EXISTING INNER APPROACH DRAWING
12	RUNWAY 6-24 EXISTING ADAS #9 INNER APPROACH DRAWING
13	RUNWAY 6-24 PROPOSED INNER APPROACH DRAWING
14	RUNWAY 6-24 PROPOSED ADAS #9 INNER APPROACH DRAWING
15	RUNWAY 10R-28L EXISTING INNER APPROACH DRAWING
16	AIRPORT LAND USE AND RPZ CONTROL PLAN
17	AIRPORT PROPERTY MAP EXHIBIT "A"
18	AIRPORT ENVIRONMENTAL INVENTORY MAP



Vicinity Map

Prepared For:
NFTA
Niagara Frontier Transportation Authority

FAA AIP PROJECT NO. 3-36-0086-040-2012
NYS PIN. 5902.14
NFTA PROJECT NO. 31NG1203
McFARLAND JOHNSON PROJECT NO. 17828.00

McFarland Johnson
49 COURT STREET, METROCENTER, PO BOX 1980
BINGHAMTON, NEW YORK 13902 www.mjinc.com

NIAGARA FRONTIER
TRANSPORTATION AUTHORITY

APPROVED _____ DATE _____

Federal Aviation Administration
New York Airports District Office

Conditionally Approved: _____
(Manager, NY ADO)

Date: _____

Subject to comments in letter dated: _____

Airspace Study Number: _____

FAA'S APPROVAL OF THIS AIRPORT LAYOUT PLAN (ALP) REPRESENTS ACCEPTANCE OF THE GENERAL LOCATION OF FUTURE FACILITIES DEPICTED. DURING THE PRELIMINARY DESIGN PHASE, THE AIRPORT OWNER IS REQUIRED TO RESUBMIT FOR APPROVAL THE FINAL LOCATIONS, HEIGHTS AND EXTERIOR FINISH OF STRUCTURES. FAA'S CONCERN IS OBSTRUCTIONS, IMPACT ON ELECTRONIC AIDS OR ADVERSE EFFECTS ON CONTROLLER VIEW OF AIRCRAFT APPROACH AND GROUND MOVEMENT AREAS WHICH COULD ADVERSELY AFFECT THE SAFETY, EFFICIENCY OR UTILITY OF THE AIRPORT.

NEW YORK STATE
DEPARTMENT OF TRANSPORTATION

APPROVED _____ DATE _____



NIAGARA
FALLS INTERNATIONAL
AIRPORT

SUSTAINABLE AIRPORT
MASTER PLAN

MARK	DATE	DESCRIPTION
ISSUE:		
NFTA PROJECT NO:	31NG1203	
DESIGNER PROJECT NO:	17828.00	
CAD DWG FILE:	CT101.dwg	
DRAWN BY:	RGT	
CHECKED BY:	RLI	
SCALE:	AS NOTED	
COPYRIGHT:		

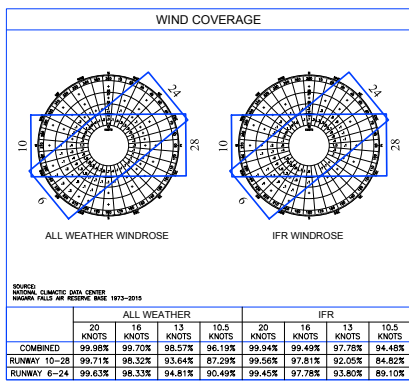
SHEET TITLE

COVER SHEET

DRAWING#
CT101

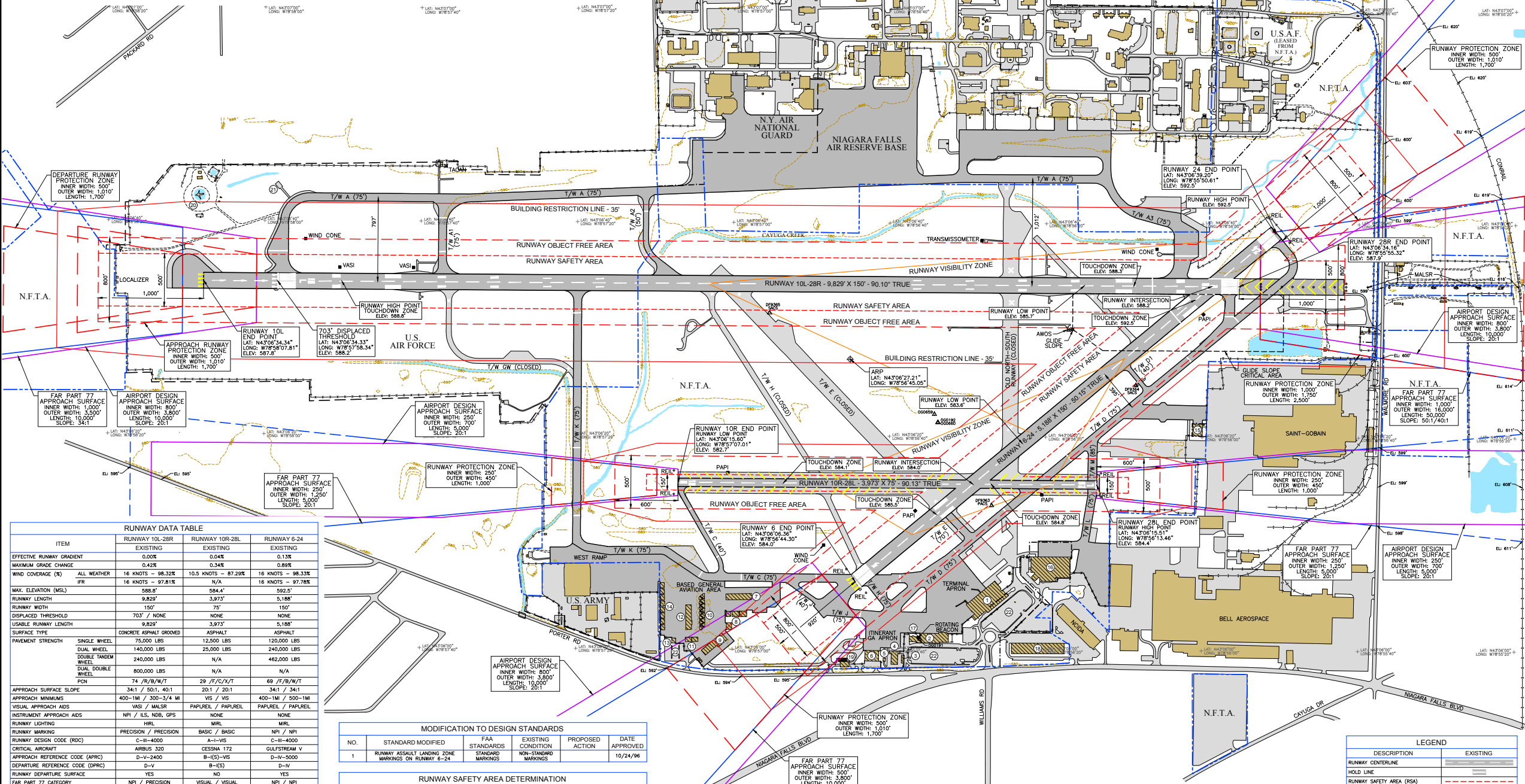
SHEET# 1 OF 18

FACILITIES TABLE		
ID	FACILITY NAME	TOP ELEV.
1	TERMINAL BUILDING	629'
2	OLD TERMINAL BUILDING	608'
3	ELECTRICAL VAULT	590'
4	NFTA FIELD OFFICE (9960 PORTER RD)	601'
5	TRITURATOR BUILDING	598'
6	FBO HANGAR (9900 PORTER RD)	606'
7	T-HANGAR	599'
8	CONVENTIONAL HANGAR	605'
9	FIELD GARAGE (9700 PORTER RD)	604'
10	T-HANGAR	593'
11	CONVENTIONAL HANGAR	599'
12	T-HANGAR	597'
13	CONVENTIONAL HANGAR	598'
14	CONVENTIONAL HANGAR	602'
15	HANGAR "B"	619'
16	CALSPAN	644'
17	AIR TRAFFIC CONTROL TOWER (9990 PORTER RD)	638'
18	RAINBOW INDUSTRIAL CENTER	603'
19	FUEL FARM (8800 PORTER RD)	599'
20	FIRE TRAINING FACILITY	630'
21	ENGINE TEST STAND	588'
22	AUTOMOBILE PARKING	N/A



TAXIWAY DATA TABLE	
ITEM	EXISTING
TAXIWAY DESIGN GROUP	2/3
TAXIWAY/TAXIWAY WIDTH	35/50
TAXIWAY SAFETY AREA (TSA) WIDTH	79/118
TAXIWAY OBJECT FREE AREA (TOFA) WIDTH	131/186
TAXIWAY OBJECT FREE AREA (TOFA) WIDTH	115/165
TAXIWAY EDGE SAFETY MARGIN (TESM)	7.5/10
TAXIWAY TO FIXED OBJECT	65.5/83
TAXIWAY TO FIXED OBJECT	57.5/81
TAXIWAY TO PARALLEL TAXIWAY	105/152
TAXIWAY TO PARALLEL TAXIWAY	97/140
TAXIWAY LIGHTING	MIL
TAXIWAY MARKING	STANDARD
TAXIWAY SURFACE TYPE	ASPHALT

COMBINED	ALL WEATHER				IFR			
	20	16	13	10.5	20	16	13	10.5
KNOTS	99.98%	99.70%	98.57%	96.19%	99.94%	99.49%	97.78%	94.48%
RUNWAY 10L-28R	99.71%	98.32%	93.64%	87.29%	99.56%	97.81%	92.05%	84.82%
RUNWAY 6-24	99.63%	98.33%	94.81%	90.49%	99.45%	97.78%	93.90%	89.10%



RUNWAY DATA TABLE			
ITEM	EXISTING	EXISTING	EXISTING
EFFECTIVE RUNWAY GRADIENT	0.00%	0.04%	0.13%
MAXIMUM GRADE CHANGE	0.42%	0.34%	0.89%
WIND COVERAGE (%) ALL WEATHER	16 KNOTS - 98.32%	10.5 KNOTS - 87.29%	16 KNOTS - 98.33%
IFR	16 KNOTS - 97.81%	N/A	16 KNOTS - 97.78%
MAX. ELEVATION (MSL)	588.8'	584.4'	582.5'
RUNWAY LENGTH	9,829'	3,973'	5,188'
RUNWAY WIDTH	150'	75'	150'
DISPLACED THRESHOLD	703' / NONE	NONE	NONE
USABLE RUNWAY LENGTH	9,829'	3,973'	5,188'
SURFACE TYPE	CONCRETE ASPHALT GROOVED	ASPHALT	ASPHALT
PAVEMENT STRENGTH	SINGLE WHEEL 75,000 LBS DUAL WHEEL 140,000 LBS	12,500 LBS 25,000 LBS	120,000 LBS 240,000 LBS
DOUBLE TAXIWAY WHEEL	240,000 LBS	N/A	482,000 LBS
DUAL DOUBLE WHEEL	800,000 LBS	N/A	N/A
PCN	74 / R/B/W/T	29 / F/C/X/T	69 / F/B/W/T
APPROACH SURFACE SLOPE	34:1 / 50:1 / 40:1	20:1 / 20:1	34:1 / 34:1
APPROACH MARKINGS	400-1M / 300-374 M	YES / YES	400-1M / 500-1M
VISUAL APPROACH AIDS	VASI / MALSR	PAP/REL / PAP/REL	PAP/REL / PAP/REL
INSTRUMENT APPROACH AIDS	NPI / ILS, NDB, GPS	NONE	NONE
RUNWAY LIGHTING	MIRL	MIRL	MIRL
RUNWAY MARKING	PRECISION / PRECISION	BASIC / BASIC	NPI / NPI
RUNWAY DESIGN CODE (RDC)	C-II-4000	A-I-VS	C-II-4000
CRITICAL AIRCRAFT	ARJES 172	CESSNA 172	GAULSTEIN V
APPROACH REFERENCE CODE (APRC)	D-2400	B-(S)-V-S	D-V-5000
DEPARTURE REFERENCE CODE (DPRC)	D-V	B-(S)	D-V
RUNWAY DEPARTURE SURFACE	YES	YES	YES
FAR PART 77 CATEGORY	NPI / PRECISION	VISUAL / VISUAL	NPI / NPI
TYPE OF AERONAUTICAL SURVEY	VERTICALLY GUIDED	NON-VERTICALLY GUIDED	VERTICALLY GUIDED
APPROACH DESIGN APPROACH SURFACE	#5 / #8	#2 / #2	#5 / #5
RUNWAY PROTECTION ZONE (RPZ)	INNER WIDTH 500' OUTER WIDTH 1,010' LENGTH 1,700' / 2,500'	250' 450' 1,010'	250' 450' 1,700'
RUNWAY OBJECT FREE AREA (ROFA)	LENGTH BEYOND 1,000' WIDTH 800'	600' 500'	1,000' / 920' 800'
RUNWAY SAFETY AREA (RSA)	LENGTH BEYOND 1,000' WIDTH 500'	300' 150'	1,000' / 920' 500'
OBSTACLE FREE ZONE (OFZ)	LENGTH BEYOND 200' WIDTH 400'	200' 200'	200' 200'
RUNWAY END COORDINATES	LATITUDE 10L - N43°08'34.34" LONGITUDE 10L - W78°58'07.81"	10R - N43°06'15.60" 10R - W78°57'07.01"	6 - N43°06'06.36" 6 - W78°56'44.30"
	LATITUDE 28R - N43°08'34.16" LONGITUDE 28R - W78°55'32.32"	28L - N43°06'15.51" 28L - W78°57'13.46"	24 - N43°06'39.20" 24 - W78°55'56.61"
RUNWAY END ELEVATIONS (MSL)	587.8' / 587.3'	582.7' / 584.4'	584.0' / 592.5'
DISPLACED THRESHOLD ELEVATION (MSL)	588.2' / N/A	N/A	N/A
TOZ ELEVATION (MSL)	588.8' / 588.3'	584.1' / 584.0'	585.5' / 592.5'
LINE OF SIGHT VIOLATIONS	NONE	NONE	NONE

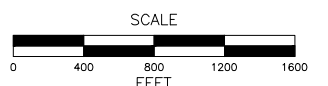
MODIFICATION TO DESIGN STANDARDS					
NO.	STANDARD MODIFIED	FAA STANDARDS	EXISTING CONDITION	PROPOSED ACTION	DATE APPROVED
1	RUNWAY ASSAULT LANDING ZONE MARKINGS ON RUNWAY 6-24	FAA STANDARDS	NON-STANDARD MARKINGS	NO RECORD	10/24/96

RUNWAY SAFETY AREA DETERMINATION					
APPROACH END ID	STANDARD RSA LENGTH BEYOND RUNWAY END	ACTUAL RSA LENGTH BEYOND RUNWAY END	RELATIONS TO RSA ALONG SIDE OF RUNWAY	RSA DETERMINATION	DATE APPROVED
10L	1,000'	1,000'	NONE	N/A	NO RECORD
28R	1,000'	1,000'	NONE	N/A	NO RECORD
10R	300'	300'	NONE	N/A	NO RECORD
28L	300'	300'	NONE	N/A	NO RECORD
6	1,000'	1,000'	NONE	N/A	NO RECORD
24	1,000'	920'	NONE	N/A	NO RECORD

DECLARED DISTANCES						
APPROACH END ID	TORA	TODA	ASDA	LDA	APPROACH END RSA LENGTH	STOP END RSA LENGTH
10L	9,829'	10,829'	9,829'	9,129'	1,000'	1,000'
28R	9,829'	10,529'	9,129'	9,129'	1,000'	1,000'
10R	3,973'	3,973'	3,973'	3,973'	300'	300'
28L	3,973'	3,973'	3,973'	3,973'	300'	300'
6	5,188'	5,188'	5,188'	5,188'	1,000'	1,000'
24	5,188'	5,188'	5,108'	5,108'	1,000'	1,000'

AIRPORT DATA TABLE	
ITEM	EXISTING
AIRPORT ELEVATION/RUNWAY HIGH POINT (MSL.)	592.5'
AIRPORT REFERENCE POINT (NAD 83) LATITUDE	N43°08'21.21"
LONGITUDE	W78°56'45.05"
MEAN MAXIMUM TEMPERATURE OF HOTTEST MONTH	81°
AIRPORT TERMINAL AREA NAVAIDS	U.S. NDB
MAGNETIC VARIATION (SOURCE: NGS)	10.7° WEST
DATE OF MAGNETIC VARIATION	2014
NIPAS SERVICE LEVEL	PRIMARY COMMERCIAL
STATE SERVICE LEVEL	COMMERCIAL
COMBINED WIND COVERAGE (%) ALL WEATHER	16 KNOTS - 99.70%
IFR	16 KNOTS - 99.49%
AIRPORT REFERENCE CODE (APRC)	C-II
DESIGN AIRCRAFT	ARJES A320
TAXIWAY LIGHTING	MIL
TAXIWAY MARKING	BASIC
TAXIWAY SURFACE TYPE	ASPHALT

NOTES:
 • ALL POSITIONAL DATA REFERENCES: NORTH AMERICAN DATUM OF 1983 (NAD83)
 • AERIAL MAPPING OBTAINED FROM AEROMETRIC DATED 2012.
 • PROPERTY BOUNDARIES BASED ON PROVIDED GIS PARCEL DATA FROM COUNTY OF NIAGARA.



LEGEND	
DESCRIPTION	EXISTING
RUNWAY CENTERLINE	---
HOLD LINE	---
RUNWAY SAFETY AREA (RSA)	---
RUNWAY OBJECT FREE AREA (ROFA)	---
RUNWAY PROTECTION ZONE (RPZ)	---
RUNWAY VISIBILITY ZONE (RVZ)	---
FAR PART 77 APPROACH SURFACE	---
AIRPORT DESIGN APPROACH SURFACE	---
NAVAID CRITICAL AREA	---
AIRPORT REFERENCE POINT	⊕
AIRPORT PAVEMENT	---
GROUND VEHICLE PAVEMENT	---
RAILROAD	---
AIRPORT BUILDINGS	---
MISCELLANEOUS BUILDINGS	---
AIRPORT PROPERTY	---
MILITARY PROPERTY	---
LEASE BOUNDARY	---
FENCE	---
GROUND ELEVATION CONTOURS (10')	---

McFarland Johnson
 48 COURT STREET, METRO CENTER, PO BOX 1980
 BIRMINGHAM, NEW YORK 13607 www.mjf.com

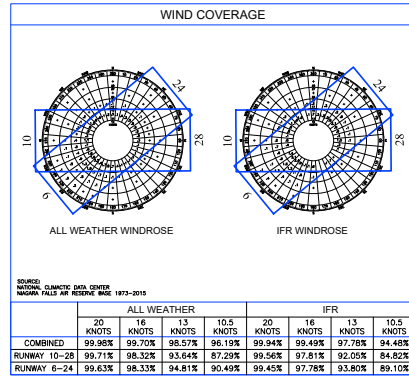
Niagara Frontier
 Transportation Authority
 Serving Buffalo Niagara

NIAGARA FALLS INTERNATIONAL AIRPORT

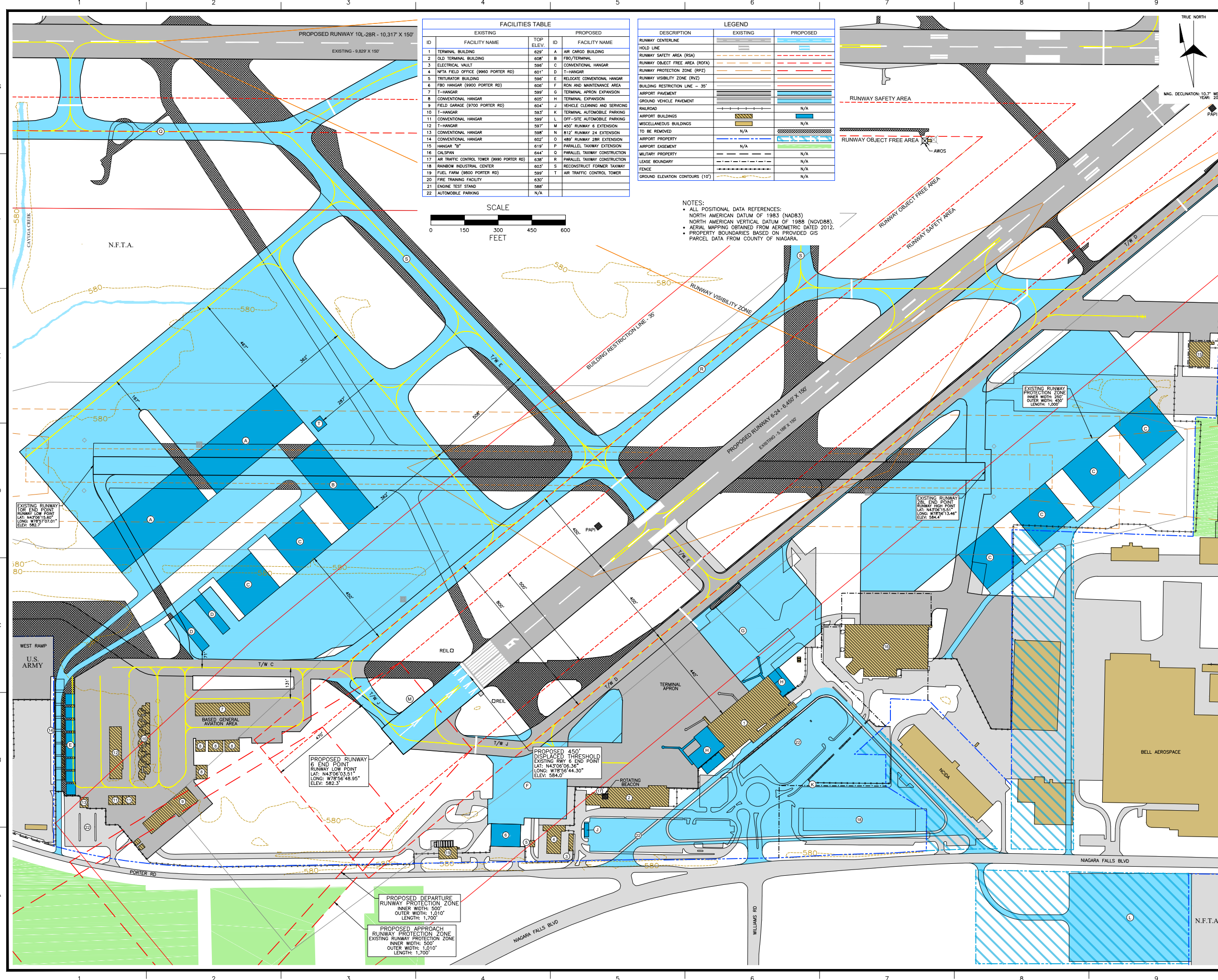
SUSTAINABLE AIRPORT MASTER PLAN

MARK	DATE	DESCRIPTION
ISSUE:		
NFTA PROJECT NO:	31NG1203	
DESIGNER PROJECT NO:	17828.00	
CAD DWG FILE:	CT102.dwg	
DRAWN BY:	RGT	
CHECKED BY:	RL	
SCALE:	AS NOTED	
COPYRIGHT:		
SHEET TITLE		
EXISTING AIRPORT LAYOUT		
DRAWING#	CT102	
SHEET#	2 OF 18	

EXISTING				PROPOSED			
ID	FACILITY NAME	TOP ELEV.	ID	FACILITY NAME	TOP ELEV.	ID	FACILITY NAME
1	TERMINAL BUILDING	629'	A	AIR CARGO BUILDING	629'		
2	OLD TERMINAL BUILDING	608'	B	FBO/TERMINAL	608'		
3	ELECTRICAL VAULT	590'	C	CONVENTIONAL HANGAR	590'		
4	NFTA FIELD OFFICE (9960 PORTER RD)	601'	D	T-HANGAR	601'		
5	TRITURATOR BUILDING	590'	E	RELOCATE CONVENTIONAL HANGAR	590'		
6	FBO HANGAR (9900 PORTER RD)	606'	F	IRON AND MAINTENANCE AREA	606'		
7	T-HANGAR	599'	G	TERMINAL APRON EXPANSION	599'		
8	CONVENTIONAL HANGAR	605'	H	TERMINAL EXPANSION	605'		
9	FIELD GARAGE (9700 PORTER RD)	604'	I	VEHICLE CLEANING AND SERVICING	604'		
10	T-HANGAR	593'	K	TERMINAL AUTOMOBILE PARKING	593'		
11	CONVENTIONAL HANGAR	599'	L	OFF-SITE AUTOMOBILE PARKING	599'		
12	T-HANGAR	597'	M	450' RUNWAY 6 EXTENSION	597'		
13	CONVENTIONAL HANGAR	598'	N	812' RUNWAY 24 EXTENSION	598'		
14	CONVENTIONAL HANGAR	602'	O	489' RUNWAY 28R EXTENSION	602'		
15	HANGAR "B"	619'	P	PARALLEL TAXIWAY EXTENSION	619'		
16	CALSPAN	644'	Q	PARALLEL TAXIWAY CONSTRUCTION	644'		
17	AIR TRAFFIC CONTROL TOWER (9990 PORTER RD)	638'	R	PARALLEL TAXIWAY CONSTRUCTION	638'		
18	RAMBOUN INDUSTRIAL CENTER	603'	S	RECONSTRUCT FORMER TAXIWAY	603'		
19	FUEL FARM (8800 PORTER RD)	599'	T	AIR TRAFFIC CONTROL TOWER	599'		
20	FIRE TRAINING FACILITY	630'			630'		
21	ENGINE TEST STAND	585'			585'		
22	AUTOMOBILE PARKING	N/A			N/A		

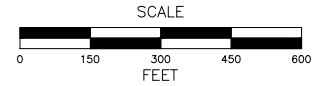


ALL WEATHER						IFR					
WINDS	KNOTS	PERCENT	WINDS	KNOTS	PERCENT	WINDS	KNOTS	PERCENT	WINDS	KNOTS	PERCENT
0-5	16	13.1%	0-5	10.5	20.1%	0-5	16	13.1%	0-5	10.5	20.1%
6-15	16	13.1%	6-15	10.5	20.1%	6-15	16	13.1%	6-15	10.5	20.1%
16-25	16	13.1%	16-25	10.5	20.1%	16-25	16	13.1%	16-25	10.5	20.1%
26-35	16	13.1%	26-35	10.5	20.1%	26-35	16	13.1%	26-35	10.5	20.1%
36-45	16	13.1%	36-45	10.5	20.1%	36-45	16	13.1%	36-45	10.5	20.1%
46-55	16	13.1%	46-55	10.5	20.1%	46-55	16	13.1%	46-55	10.5	20.1%
56-65	16	13.1%	56-65	10.5	20.1%	56-65	16	13.1%	56-65	10.5	20.1%
66-75	16	13.1%	66-75	10.5	20.1%	66-75	16	13.1%	66-75	10.5	20.1%
76-85	16	13.1%	76-85	10.5	20.1%	76-85	16	13.1%	76-85	10.5	20.1%
86-95	16	13.1%	86-95	10.5	20.1%	86-95	16	13.1%	86-95	10.5	20.1%
96-105	16	13.1%	96-105	10.5	20.1%	96-105	16	13.1%	96-105	10.5	20.1%
106-115	16	13.1%	106-115	10.5	20.1%	106-115	16	13.1%	106-115	10.5	20.1%
116-125	16	13.1%	116-125	10.5	20.1%	116-125	16	13.1%	116-125	10.5	20.1%
126-135	16	13.1%	126-135	10.5	20.1%	126-135	16	13.1%	126-135	10.5	20.1%
136-145	16	13.1%	136-145	10.5	20.1%	136-145	16	13.1%	136-145	10.5	20.1%
146-155	16	13.1%	146-155	10.5	20.1%	146-155	16	13.1%	146-155	10.5	20.1%
156-165	16	13.1%	156-165	10.5	20.1%	156-165	16	13.1%	156-165	10.5	20.1%
166-175	16	13.1%	166-175	10.5	20.1%	166-175	16	13.1%	166-175	10.5	20.1%
176-185	16	13.1%	176-185	10.5	20.1%	176-185	16	13.1%	176-185	10.5	20.1%
186-195	16	13.1%	186-195	10.5	20.1%	186-195	16	13.1%	186-195	10.5	20.1%
196-205	16	13.1%	196-205	10.5	20.1%	196-205	16	13.1%	196-205	10.5	20.1%
206-215	16	13.1%	206-215	10.5	20.1%	206-215	16	13.1%	206-215	10.5	20.1%
216-225	16	13.1%	216-225	10.5	20.1%	216-225	16	13.1%	216-225	10.5	20.1%
226-235	16	13.1%	226-235	10.5	20.1%	226-235	16	13.1%	226-235	10.5	20.1%
236-245	16	13.1%	236-245	10.5	20.1%	236-245	16	13.1%	236-245	10.5	20.1%
246-255	16	13.1%	246-255	10.5	20.1%	246-255	16	13.1%	246-255	10.5	20.1%
256-265	16	13.1%	256-265	10.5	20.1%	256-265	16	13.1%	256-265	10.5	20.1%
266-275	16	13.1%	266-275	10.5	20.1%	266-275	16	13.1%	266-275	10.5	20.1%
276-285	16	13.1%	276-285	10.5	20.1%	276-285	16	13.1%	276-285	10.5	20.1%
286-295	16	13.1%	286-295	10.5	20.1%	286-295	16	13.1%	286-295	10.5	20.1%
296-305	16	13.1%	296-305	10.5	20.1%	296-305	16	13.1%	296-305	10.5	20.1%
306-315	16	13.1%	306-315	10.5	20.1%	306-315	16	13.1%	306-315	10.5	20.1%
316-325	16	13.1%	316-325	10.5	20.1%	316-325	16	13.1%	316-325	10.5	20.1%
326-335	16	13.1%	326-335	10.5	20.1%	326-335	16	13.1%	326-335	10.5	20.1%
336-345	16	13.1%	336-345	10.5	20.1%	336-345	16	13.1%	336-345	10.5	20.1%
346-355	16	13.1%	346-355	10.5	20.1%	346-355	16	13.1%	346-355	10.5	20.1%
356-365	16	13.1%	356-365	10.5	20.1%	356-365	16	13.1%	356-365	10.5	20.1%
366-375	16	13.1%	366-375	10.5	20.1%	366-375	16	13.1%	366-375	10.5	20.1%
376-385	16	13.1%	376-385	10.5	20.1%	376-385	16	13.1%	376-385	10.5	20.1%
386-395	16	13.1%	386-395	10.5	20.1%	386-395	16	13.1%	386-395	10.5	20.1%
396-405	16	13.1%	396-405	10.5	20.1%	396-405	16	13.1%	396-405	10.5	20.1%
406-415	16	13.1%	406-415	10.5	20.1%	406-415	16	13.1%	406-415	10.5	20.1%
416-425	16	13.1%	416-425	10.5	20.1%	416-425	16	13.1%	416-425	10.5	20.1%
426-435	16	13.1%	426-435	10.5	20.1%	426-435	16	13.1%	426-435	10.5	20.1%
436-445	16	13.1%	436-445	10.5	20.1%	436-445	16	13.1%	436-445	10.5	20.1%
446-455	16	13.1%	446-455	10.5	20.1%	446-455	16	13.1%	446-455	10.5	20.1%
456-465	16	13.1%	456-465	10.5	20.1%	456-465	16	13.1%	456-465	10.5	20.1%
466-475	16	13.1%	466-475	10.5	20.1%	466-475	16	13.1%	466-475	10.5	20.1%
476-485	16	13.1%	476-485	10.5	20.1%	476-485	16	13.1%	476-485	10.5	20.1%
486-495	16	13.1%	486-495	10.5	20.1%	486-495	16	13.1%	486-495	10.5	20.1%
496-505	16	13.1%	496-505	10.5	20.1%	496-505	16	13.1%	496-505	10.5	20.1%
506-515	16	13.1%	506-515	10.5	20.1%	506-515	16	13.1%	506-515	10.5	20.1%
516-525	16	13.1%	516-525	10.5	20.1%	516-525	16	13.1%	516-525	10.5	20.1%
526-535	16	13.1%	526-535	10.5	20.1%	526-535	16	13.1%	526-535	10.5	20.1%
536-545	16	13.1%	536-545	10.5	20.1%	536-545	16	13.1%	536-545	10.5	20.1%
546-555	16	13.1%	546-555	10.5	20.1%	546-555	16	13.1%	546-555	10.5	20.1%
556-565	16	13.1%	556-565	10.5	20.1%	556-565	16	13.1%	556-565	10.5	20.1%
566-575	16	13.1%	566-575	10.5	20.1%	566-575	16	13.1%	566-575	10.5	20.1%
576-585	16	13.1%	576-585	10.5	20.1%	576-585	16	13.1%	576-585	10.5	20.1%
586-595	16	13.1%	586-595	10.5	20.1%	586-595	16	13.1%	586-595	10.5	20.1%
596-605	16	13.1%	596-605	10.5	20.1%	596-605	16	13.1%	596-605	10.5	20.1%
606-615	16	13.1%	606-615	10.5	20.1%	606-615	16	13.1%	606-615	10.5	20.1%
616-625	16	13.1%	616-625	10.5	20.1%	616-625	16	13.1%	616-625	10.5	20.1%
626-635	16	13.1%	626-635	10.5	20.1%	626-635	16	13.1%	626-635	10.5	20.1%
636-645	16	13.1%	636-645	10.5	20.1%	636-645	16	13.1%	636-645	10.5	20.1%
646-655	16	13.1%	646-655	10.5	20.1%	646-655	16	13.1%	646-655	10.5	20.1%
656-665	16	13.1%	656-665	10.5	20.1%	656-665	16	13.1%	656-665	10.5	20.1%
666-675	16	13.1%	666-675	10.5	20.1%	666-675	16	13.1%	666-675	10.5	20.1%
676-685	16	13.1%	676-685	10.5	20.1%	676-685	16	13.1%	676-685	10.5	20.1%
686-695	16	13.1%	686-695	10.5	20.1%	686-695	16	13.1%	686-695	10.5	20.1%
696-705	16	13.1%	696-705	10.5	20.1%	696-705	16	13.1%	696-705	10.5	20.1%
706-715	16	13.1%	706-715	10.5	20.1%	706-715	16	13.1%	706-715	10.5	20.1%
716-725	16	13.1%	716-725	10.5	20.1%	716-725	16	13.1%	716-725	10.5	20.1%
726-735	16	13.1%	726-735	10.5	20.1%	726-735	16	13.1%	726-735	10.5	20.1%
736-745	16	13.1%	736-745	10.5	20.1%	736-745	16	13.1%	736-745	10.5	20.1%
746-755	16	13.1%	746-755	10.5	20.1%	746-755	16	13.1%	746-755	10.5	20.1%
756-765	16	13.1%	756-765	10.5	20.1%	756-765	16	13.1%	756-765	10.5	20.1%
766-775	16	13.1%	766-775	10.5	20.1%	766-775	16	13.1%	766-775	10.5	20.1%
776-785	16	13.1%	776-785	10.5	20.1%	776-785	16	13.1%	776-785	10.5	20.1%



FACILITIES TABLE				
EXISTING		PROPOSED		
ID	FACILITY NAME	TOP ELEV.	ID	FACILITY NAME
1	TERMINAL BUILDING	629'	A	AIR CARGO BUILDING
2	OLD TERMINAL BUILDING	608'	B	FBO/TERMINAL
3	ELECTRICAL MOUNT	596'	C	CONVENTIONAL HANGAR
4	NFTA FIELD OFFICE (9960 PORTER RD)	601'	D	T-HANGAR
5	TRIBUTOR BUILDING	596'	E	RELOCATE CONVENTIONAL HANGAR
6	FBO HANGAR (9900 PORTER RD)	606'	F	RON AND MAINTENANCE AREA
7	T-HANGAR	599'	G	TERMINAL APRON EXPANSION
8	CONVENTIONAL HANGAR	605'	H	TERMINAL EXPANSION
9	FIELD GARAGE (9700 PORTER RD)	604'	J	VEHICLE CLEANING AND SERVICING
10	T-HANGAR	593'	K	TERMINAL AUTOMOBILE PARKING
11	CONVENTIONAL HANGAR	599'	L	OFF-SITE AUTOMOBILE PARKING
12	T-HANGAR	597'	M	450' RUNWAY 6 EXTENSION
13	CONVENTIONAL HANGAR	598'	N	812' RUNWAY 24 EXTENSION
14	CONVENTIONAL HANGAR	602'	D	489' RUNWAY 28B EXTENSION
15	HANGAR "B"	619'	P	PARALLEL TAXIWAY EXTENSION
16	CALSPAN	644'	Q	PARALLEL TAXIWAY CONSTRUCTION
17	AIR TRAFFIC CONTROL TOWER (9990 PORTER RD)	636'	R	PARALLEL TAXIWAY CONSTRUCTION
18	RAINBOW INDUSTRIAL CENTER	603'	S	RECONSTRUCT FORMER TAXIWAY
19	FUEL FARM (9800 PORTER RD)	599'	T	AIR TRAFFIC CONTROL TOWER
20	FIRE TRAINING FACILITY	630'		
21	ENGINE TEST STAND	586'		
22	AUTOMOBILE PARKING	N/A		

DESCRIPTION	LEGEND	
	EXISTING	PROPOSED
RUNWAY CENTERLINE	[Symbol]	[Symbol]
HOLD LINE	[Symbol]	[Symbol]
RUNWAY SAFETY AREA (RSA)	[Symbol]	[Symbol]
RUNWAY OBJECT FREE AREA (ROFA)	[Symbol]	[Symbol]
RUNWAY PROTECTION ZONE (RPZ)	[Symbol]	[Symbol]
RUNWAY VISIBILITY ZONE (RVZ)	[Symbol]	[Symbol]
BUILDING RESTRICTION LINE - 35'	[Symbol]	[Symbol]
AIRPORT PAVEMENT	[Symbol]	[Symbol]
GROUND VEHICLE PAVEMENT	[Symbol]	[Symbol]
RAILROAD	[Symbol]	[Symbol]
AIRPORT BUILDINGS	[Symbol]	[Symbol]
MISCELLANEOUS BUILDINGS	[Symbol]	[Symbol]
TO BE REMOVED	[Symbol]	[Symbol]
AIRPORT PROPERTY	[Symbol]	[Symbol]
AIRPORT EASEMENT	[Symbol]	[Symbol]
MILITARY PROPERTY	[Symbol]	[Symbol]
LEASE BOUNDARY	[Symbol]	[Symbol]
FENCE	[Symbol]	[Symbol]
GROUND ELEVATION CONTOURS (10')	[Symbol]	[Symbol]



- NOTES:
- ALL POSITIONAL DATA REFERENCES: NORTH AMERICAN DATUM OF 1983 (NAD83) NORTH AMERICAN VERTICAL DATUM OF 1988 (NGVD88).
 - AERIAL MAPPING OBTAINED FROM AEROMETRIC DATED 2012.
 - PROPERTY BOUNDARIES BASED ON PROVIDED GIS PARCEL DATA FROM COUNTY OF NIAGARA.



NFTA
Niagara Frontier
Transportation Authority
Serving Buffalo Niagara

**NIAGARA
FALLS INTERNATIONAL
AIRPORT**

SUSTAINABLE AIRPORT
MASTER PLAN

MARK	DATE	DESCRIPTION
ISSUE:		
NFTA PROJECT NO:	31NG1203	
DESIGNER PROJECT NO:	17828.00	
CAD DWG FILE:	CT104.dwg	
DRAWN BY:	RGT	
CHECKED BY:	RLS	
SCALE:	AS NOTED	
COPYRIGHT:		

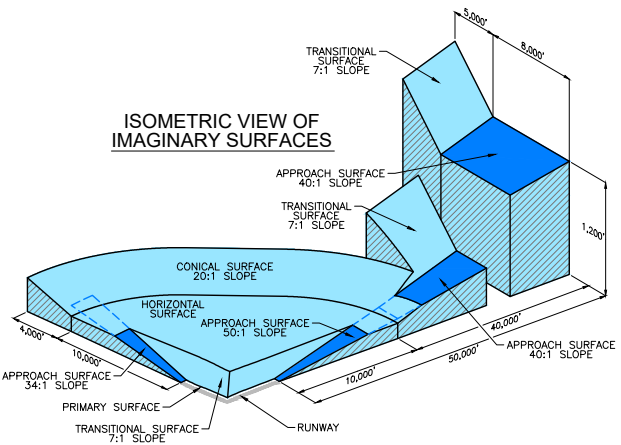
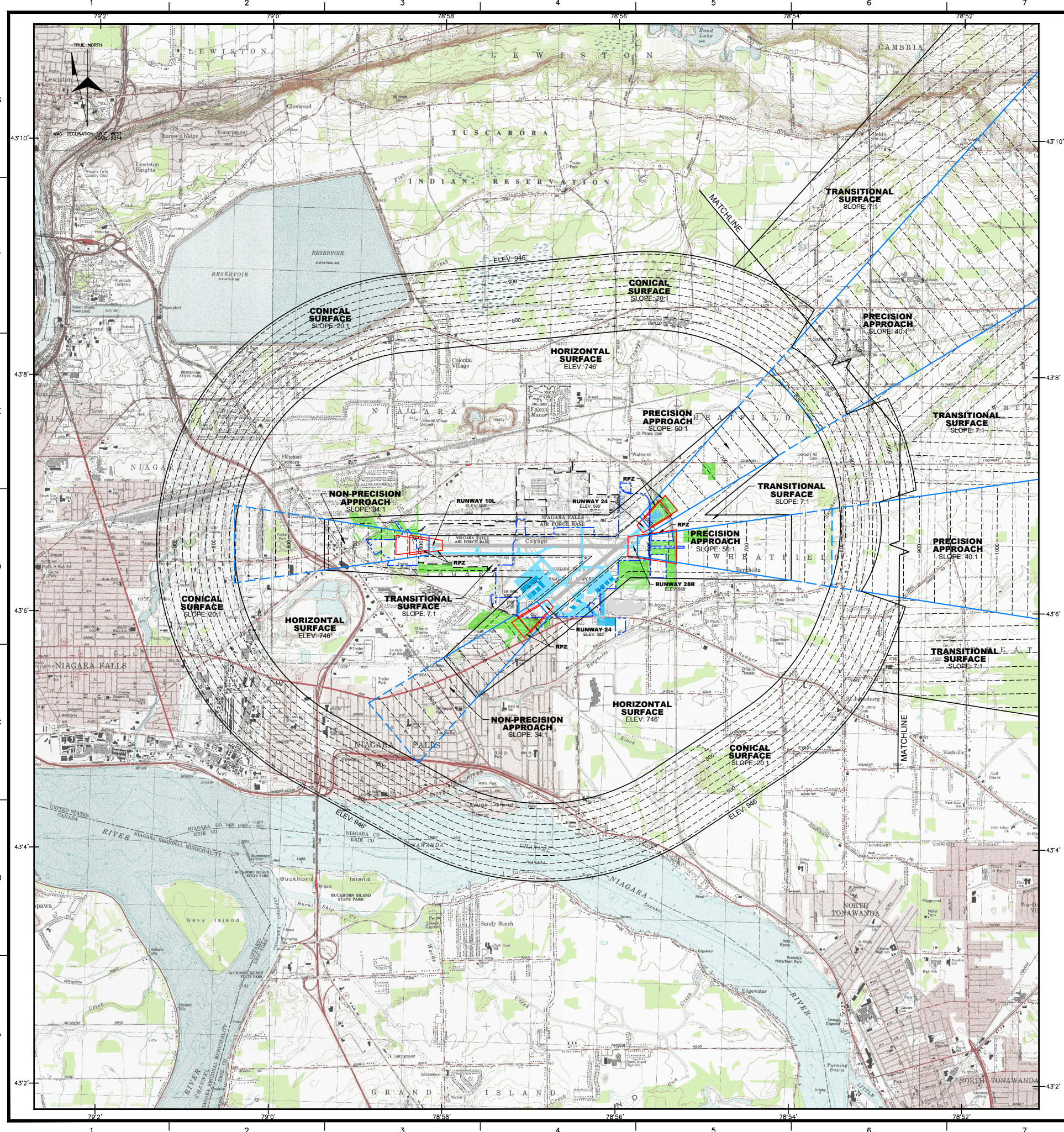
SHEET TITLE

TERMINAL AREA PLAN

DRAWING# **CT104**

SHEET# 4 OF 18

I:\NFTA\17828.00 info mpa\Drawings\AutoCAD\terminal.mpa\CT104.dwg



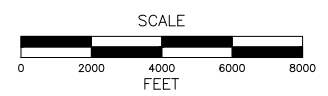
SOURCE: USGS QUADRANGLES

LEWISTON, NEW YORK	RANSOMVILLE, NEW YORK	CAMBRIA, NEW YORK	LOCKPORT, NEW YORK
NIAGARA FALLS, NEW YORK	TONAWANDA EAST, NEW YORK	TONAWANDA WEST, NEW YORK	CLARENCE CENTER, NEW YORK

- MILITARY PROPERTY
- EXISTING AIRPORT PROPERTY
- PROPOSED AIRPORT PROPERTY
- PROPOSED AIRPORT EASEMENT

NOTES:

- FOR INNER APPROACH OBSTRUCTIONS PLEASE REFER TO SHEETS 7 THRU 11.
- NO OBSTRUCTIONS FOUND TO OUTER FAR PART 77 SURFACES.
- ALL POSITIONAL DATA REFERENCES: NORTH AMERICAN DATUM OF 1983 (NAD83)
- NORTH AMERICAN VERTICAL DATUM OF 1988 (NGVD88).
- AERIAL MAPPING OBTAINED FROM AEROMETRIC DATED 2012.
- PROPERTY BOUNDARIES BASED ON PROVIDED GIS PARCEL DATA FROM COUNTY OF NIAGARA.



Niagara Frontier Transportation Authority
Serving Buffalo Niagara

NIAGARA FALLS INTERNATIONAL AIRPORT

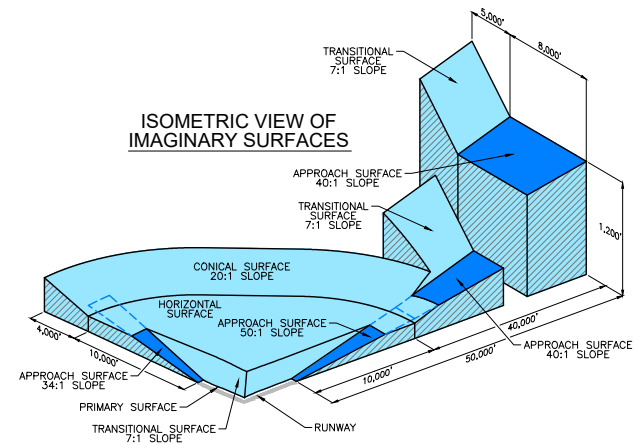
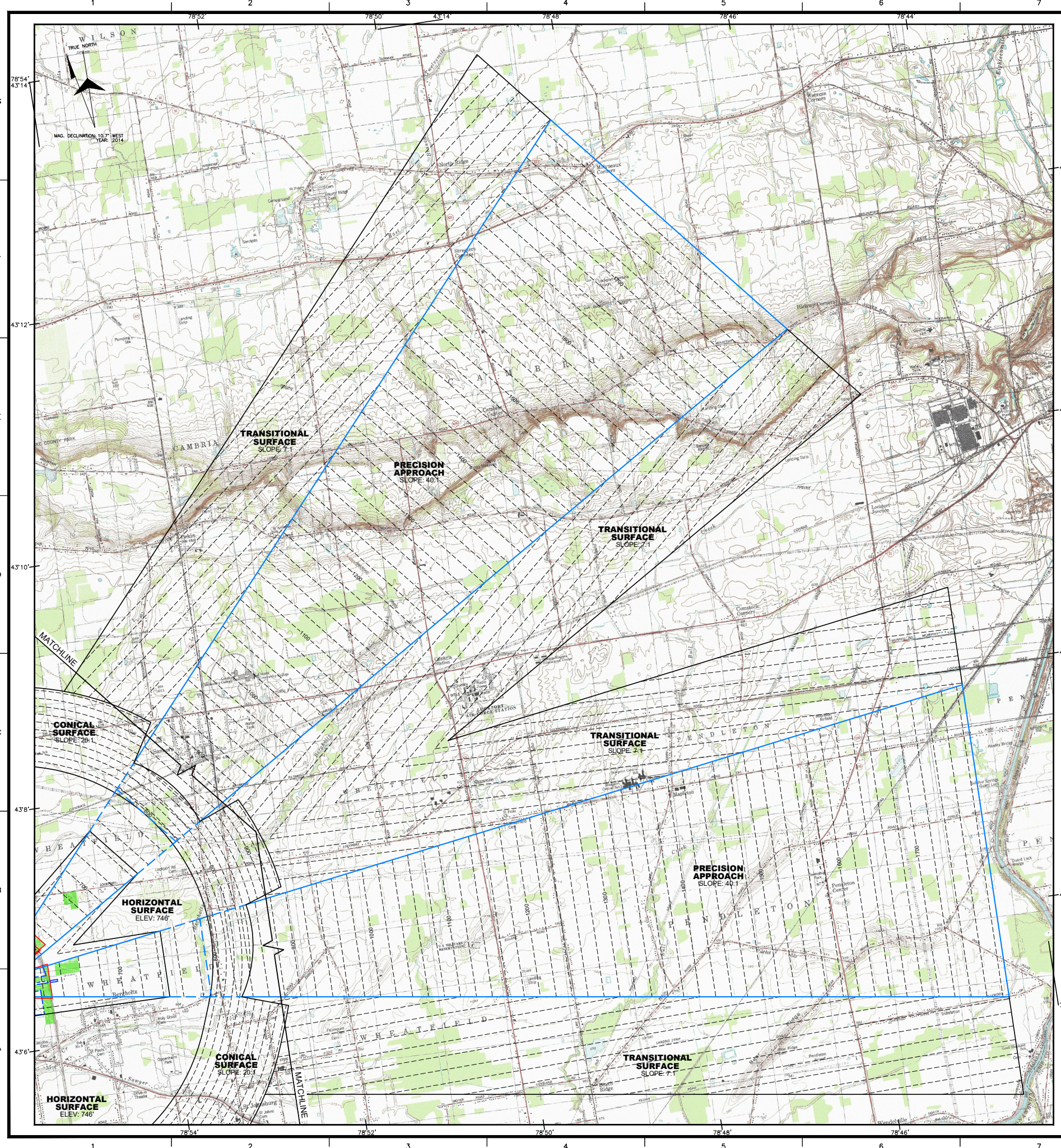
SUSTAINABLE AIRPORT MASTER PLAN

MARK	DATE	DESCRIPTION
ISSUE:		
NFTA PROJECT NO:	31NG1203	
DESIGNER PROJECT NO:	17828.00	
CAD DWG FILE:	CT105.dwg	
DRAWN BY:	RGT	
CHECKED BY:	RLI	
SCALE:	AS NOTED	
COPYRIGHT:		

AIRPORT AIRSPACE PLAN

DRAWING# **CT105**
SHEET# 5 OF 18

I:\NFTA\17828.00 info.mxd (Drawn) (Drawn) (AutoCAD) (mxd) (CT105.dwg)



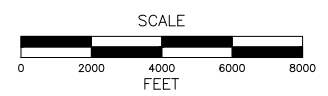
SOURCE: USGS QUADRANGLES

LEWISTON, NEW YORK	RANSOMVILLE, NEW YORK	CAMBRIA, NEW YORK	LOCKPORT, NEW YORK
NIAGARA FALLS, NEW YORK	TONAWANDA EAST, NEW YORK	TONAWANDA WEST, NEW YORK	CLARENCE CENTER, NEW YORK

- MILITARY PROPERTY
- EXISTING AIRPORT PROPERTY
- PROPOSED AIRPORT PROPERTY
- PROPOSED AIRPORT EASEMENT

NOTES:

- FOR INNER APPROACH OBSTRUCTIONS PLEASE REFER TO SHEETS 7 THRU 11.
- NO OBSTRUCTIONS FOUND TO OUTER FAR PART 77 SURFACES.
- ALL POSITIONAL DATA REFERENCES: NORTH AMERICAN DATUM OF 1983 (NAD83)
- NORTH AMERICAN VERTICAL DATUM OF 1988 (NGVD88).
- AERIAL MAPPING OBTAINED FROM AEROMETRIC DATED 2012.
- PROPERTY BOUNDARIES BASED ON PROVIDED GIS PARCEL DATA FROM COUNTY OF NIAGARA.



MARK	DATE	DESCRIPTION
ISSUE:		
NFTA PROJECT NO:	31NG1203	
DESIGNER PROJECT NO:	17828.00	
CAD DWG FILE:	CT105.dwg	
DRAWN BY:	RGT	
CHECKED BY:	RLL	
SCALE:	AS NOTED	
COPYRIGHT:		

SHEET TITLE

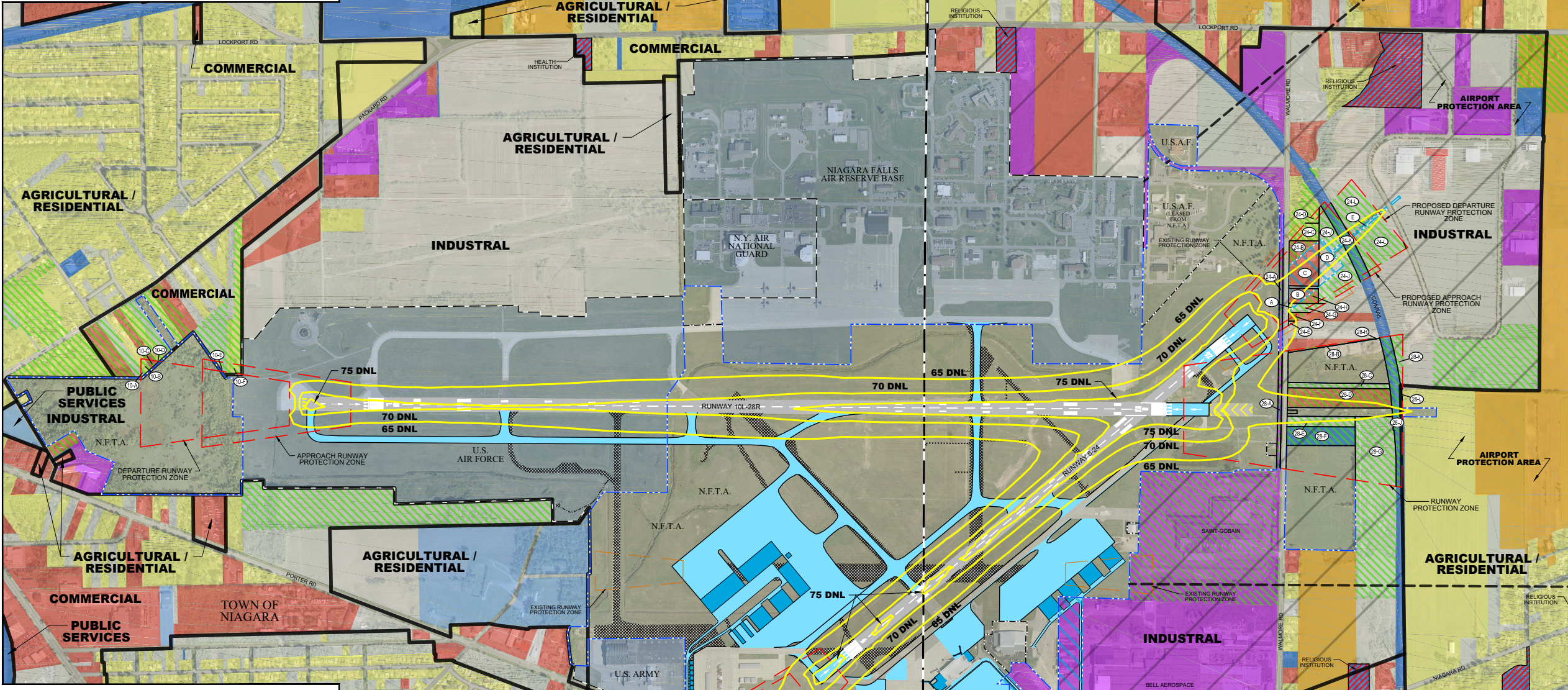
AIRPORT AIRSPACE
PLAN
OUTER APPROACH
SURFACES

DRAWING#
CT106

SHEET# 6 OF 18

I:\NFTA\17828.00.dwg mpa\Drawings\Airport\Outer.dwg mpa\CT105.dwg

RPZ CONTROL PLAN - RUNWAY 10L-28R					
REFERENCE NUMBER	TAX PARCEL NUMBER	OWNER	LAND USE	ACREAGE	PROPOSED ACTION
RUNWAY 10L					
10-A	145.08-4-13	MORRIS, PAMELA M	VACANT LAND	0.07	EASEMENT
10-B	145.08-4-14	WEBER, THOMAS R	RESIDENTIAL	0.30	EASEMENT
10-C	145.08-4-15	WEBER, THOMAS R	COMMERCIAL	0.20	EASEMENT
10-D	145.08-4-16	FRANTZ, GAIL	RESIDENTIAL	0.01	EASEMENT
10-E	145.08-4-34	CANDRELLA, JAMES	VACANT LAND	0.31	EASEMENT
10-F	146.05-1-2	BUCK, SARAH L	RESIDENTIAL	0.49	EASEMENT
RUNWAY 28R					
28-A	146.00-1-10-2	WHEATFIELD BUSINESS PARK	INDUSTRIAL	1.22	EASEMENT
28-B	147.00-1-1-121	6461 WALDMORE ROAD LLC	COMMERCIAL	0.35	EASEMENT
28-C	147.00-1-1-120	NIAGARA COUNTY INDUSTRIAL	VACANT LAND	1.57	EASEMENT
28-D	147.00-1-1-122	PLAZA MOTORS OF WHEATFIELD INC	COMMERCIAL	0.94	EASEMENT
28-E	147.00-1-1-123	PLAZA MOTORS OF WHEATFIELD INC	VACANT LAND	2.12	EASEMENT
28-F	147.00-1-1-124	UNITED STATES OF AMERICA	PUBLIC SERVICES	3.85	EASEMENT
28-G	147.00-1-1-125	KOSIAC, DAVID	VACANT LAND	7.93	EASEMENT
28-H	147.00-1-1-126	DOUBLES C REALTY OF NY INC	VACANT LAND	0.02	EASEMENT
28-I	700.00-44-1	NEW YORK CENTRAL LINES LLC	PUBLIC SERVICES	4.09	EASEMENT
28-J	147.00-1-104	HAFEMAN, ERIC	VACANT LAND	1.07	EASEMENT
28-K	147.00-1-49-1	MILLEVILLE, ROY P - SUZANNE	RESIDENTIAL	0.02	EASEMENT

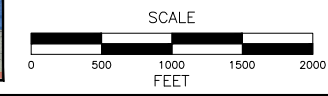


RPZ CONTROL PLAN - RUNWAY 6-24					
REFERENCE NUMBER	TAX PARCEL NUMBER	OWNER	LAND USE	ACREAGE	PROPOSED ACTION
RUNWAY 6					
6-A	146.18-1-39	LODINA INTERIORS	VACANT LAND	2.97	EASEMENT
6-B	146.18-1-40	WEBER, INC. JOSEPH C	VACANT LAND	0.78	EASEMENT
6-C	146.18-1-41	MOSEBY, RICHARD	RESIDENTIAL	0.33	EASEMENT
6-D	146.18-1-42	ZORTMAN, TRACE	RESIDENTIAL	0.31	EASEMENT
6-E	146.18-1-43	FIRST ASSEMBLY OF GOD, INC.	VACANT LAND	3.82	EASEMENT
6-F	146.18-1-44	GRAY, RUTH D	RESIDENTIAL	0.17	EASEMENT
6-G	146.18-1-45	LAWRENCE LINDSAY L	RESIDENTIAL	0.15	EASEMENT
6-H	146.18-1-46	MARSHAY LOUNGE, INC.	COMMERCIAL	0.78	EASEMENT
6-I	146.18-1-47	WEBER, INC. JOSEPH C	VACANT LAND	0.22	EASEMENT
6-J	146.18-1-48	WEBER, INC. JOSEPH C	VACANT LAND	0.80	EASEMENT
6-K	146.18-1-49	GMMA PROPERTIES, LLC	VACANT LAND	0.05	EASEMENT
6-L	146.18-1-50	WEBER, JOSEPH C	VACANT LAND	0.09	EASEMENT
6-M	146.18-1-51	WEBER, JOSEPH C	VACANT LAND	0.09	EASEMENT
6-N	146.18-1-52	GMMA PROPERTIES LLC	COMMERCIAL	0.06	EASEMENT
6-O	146.18-1-53	FIRST ASSEMBLY OF GOD A	COMMERCIAL	0.05	EASEMENT
6-P	146.18-1-54	FIRST ASSEMBLY OF GOD INC	PUBLIC SERVICES	2.55	EASEMENT
6-Q	146.18-1-55	LEWISTON MANAGEMENT	VACANT LAND	0.79	EASEMENT
6-R	146.18-1-56	LEWISTON MANAGEMENT GROUP LLC	COMMERCIAL	1.74	EASEMENT
6-S	146.18-1-57	LA DUCA ANGELO F B	VACANT LAND	0.99	EASEMENT
6-T	146.18-1-58	PHIL KEN CORP	VACANT LAND	0.22	EASEMENT
6-U	146.18-1-59	UNITED STATES POSTAL	PUBLIC SERVICES	0.30	EASEMENT
6-V	146.18-1-60	PATEL VISHAL & PATEL SANJEEV	COMMERCIAL	0.46	EASEMENT
6-W	146.18-1-61	KASPER VICTORIA	COMMERCIAL	0.19	EASEMENT
RUNWAY 24					
A	147.00-1-9-2	GIUGINO, CHARLES A	VACANT LAND	0.13	ACQUISITION
B	147.00-1-9-3	FAMILY AUTO CENTERS INC	COMMERCIAL	0.85	ACQUISITION
C	147.00-1-10-1	MORRIS, RICHARD-MICHELE	COMMERCIAL	2.92	ACQUISITION
D	147.00-1-10-2	METZGER REMOVAL INC	VACANT LAND	2.17	ACQUISITION
E	147.00-1-10-3	NIAGARA COUNTY INDUSTRIAL	VACANT LAND	0.25	ACQUISITION
24-A	146.00-1-10-2	WHEATFIELD BUSINESS PARK	INDUSTRIAL	0.84	EASEMENT
24-B	147.00-1-10-1	MORRIS, RICHARD-MICHELE	COMMERCIAL	1.15	EASEMENT
24-C	147.00-1-10-2	CRAMER-BENJAMIN, RICHARD	RESIDENTIAL	1.13	EASEMENT
24-D	147.00-1-10-3	JOHNSON, GRANT F JR - PAMELA	RESIDENTIAL	0.32	EASEMENT
24-E	147.00-1-10-4	INDUSTRIAL SERVICES OF NY INC	VACANT LAND	0.06	EASEMENT
24-F	147.00-1-9-1	INDUSTRIAL SERVICES OF NY INC	COMMERCIAL	0.39	EASEMENT
24-G	147.00-1-9-2	GIUGINO, CHARLES A	VACANT LAND	0.50	EASEMENT
24-H	147.00-1-9-3	FAMILY AUTO CENTERS INC	COMMERCIAL	0.64	EASEMENT
24-I	147.00-1-10-1	METZGER REMOVAL INC	VACANT LAND	1.91	EASEMENT
24-J	700.00-44-1	NEW YORK CENTRAL LINES LLC	PUBLIC SERVICES	2.63	EASEMENT
24-K	147.00-1-81-111	NIAGARA COUNTY INDUSTRIAL	VACANT LAND	0.27	EASEMENT

NOTES:

- TOWN OF WHEATFIELD PARCELS ON PLAN, BUT OUTSIDE OF AIRPORT PROTECTION AREA, REGULATED BY AIRPORT POTENTIAL IMPACT AREA OVERLAY.
- LAND USE BASED ON PROVIDED GIS PARCEL DATA FROM COUNTY OF NIAGARA.
- ALL POSITIONAL DATA REFERENCES: NORTH AMERICAN DATUM OF 1983 (NAD83)
- NORTH AMERICAN VERTICAL DATUM OF 1988 (NGVD88).
- AERIAL MAPPING OBTAINED FROM AEROMETRIC DATED 2012.
- PROPERTY BOUNDARIES BASED ON PROVIDED GIS PARCEL DATA FROM COUNTY OF NIAGARA.

LEGEND		
DESCRIPTION	EXISTING	PROPOSED
RUNWAY PROTECTION ZONE (RPZ)	---	---
AIRPORT PAVEMENT	---	---
GROUND VEHICLE PAVEMENT	---	---
AIRPORT BUILDINGS	---	---
TO BE REMOVED	---	---
AIRPORT PROPERTY	---	---
AIRPORT EASEMENT	---	---
MILITARY PROPERTY	---	N/A
LEASE BOUNDARY	---	N/A
MUNICIPALITY BOUNDARY	---	N/A
PARCEL BOUNDARIES	---	N/A
NOISE CONTOURS	---	N/A
LAND USE - AGRICULTURAL	---	N/A
LAND USE - COMMERCIAL	---	N/A
LAND USE - INDUSTRIAL	---	N/A
LAND USE - PUBLIC SERVICES	---	N/A
LAND USE - RECREATION & ENTERTAINMENT	---	N/A
LAND USE - RESIDENTIAL	---	N/A
LAND USE - WILD, FORESTED, PARKS	---	N/A
LAND USE - VACANT	---	N/A
ZONING BOUNDARY	---	N/A
AIRPORT ZONE ONE OVERLAY	---	N/A
AIRPORT PROTECTION AREA	---	N/A
NOISE SENSITIVE	---	N/A



TRUE NORTH

MAG. DECLINATION: 10.7° WEST
YEAR: 2014

40 COURT STREET, METROCENTER, PO BOX 1980
BRIGHTON, NEW YORK 13002 www.mfj.com

Niagara Frontier
Transportation Authority
Serving Buffalo Niagara

NIAGARA
FALLS INTERNATIONAL
AIRPORT

SUSTAINABLE AIRPORT
MASTER PLAN

MARK	DATE	DESCRIPTION
ISSUE:		
NFTA PROJECT NO:	31NG1203	
DESIGNER PROJECT NO:	17828.00	
CAD DWG FILE:	CT116.dwg	
DRAWN BY:	RGT	
CHECKED BY:	RLL	
SCALE:	AS NOTED	
COPYRIGHT:		
SHEET TITLE		
AIRPORT LAND USE AND RPZ CONTROL PLAN		
DRAWING#	CT116	
SHEET#	16 OF 18	

I:\NFTA\17828.00.dwg mpa\Drawings\Airport\CT116.dwg

REFERENCE NUMBER	TAX PARCEL NUMBER	GRANTOR	BOOK/PAGE	ACREAGE	ACQUISITION DATE	AIP NUMBER	PURPOSE	
1	146.14-1-9	UNITED STATES OF AMERICA	1566/795	2.20	1975	N/A		
2	146.14-1-1	CITY OF NIAGARA FALLS	1501/647	325.10	1969	N/A		
3	146.00-1-8.2	NIAGARA COUNTY INDUSTRIAL DEVELOPMENT AGENCY	2044/01	4.80	1969	N/A		
4	146.00-1-8.13	CITY OF NIAGARA FALLS	1501/647	4.80	1969	N/A		
5	146.00-1-8.1	DONALD M. SPENCER	2517/305	18.40	1994	3-36-0086-02-84		
6	146.00-1-8.11	CITY OF NIAGARA FALLS	1501/647	310.80	1969	N/A	AIRPORT DEVELOPMENT	
7	147.00-1-53.2	HEMSON DORAN, MARIE E. SCHIFFERLE, ESTATE OF HAROLD DORAN MERRIAM DORAN EXECUTRIX, BARNABE SECOR, WARRAN L. WALDOW, JAMES A. PORTER	2440/179	22.20	1993	3-36-0086-09-92		
8	147.00-1-76	RUDOLPH H. ZIMMERMAN & EDNA L. ZIMMERMAN	1226/447	0.10	1956	N/A		
9	147.00-1-73	CITY OF NIAGARA FALLS	1501/647	3.70	1969	N/A		
10	147.00-1-86	ARTHUR A. SPINA, SR.	3044/149	10.70	2000	3-36-0086-04-86		
11	146.00-1-10.12	WHEATFIELD BUSINESS PARK, LLC	2982/209	9.60	2010	N/A		
12	145.12-2-6.1	HUTCH ENTERPRISES INC	2016/01894	68.05	2016	3-36-0086-45-16	RFZ CONTROL	
13	145.08-4-18	HUTCHINS, LEASON J	2016/01894	1.62	2016	3-36-0086-45-16		
TOTAL:							782.27	

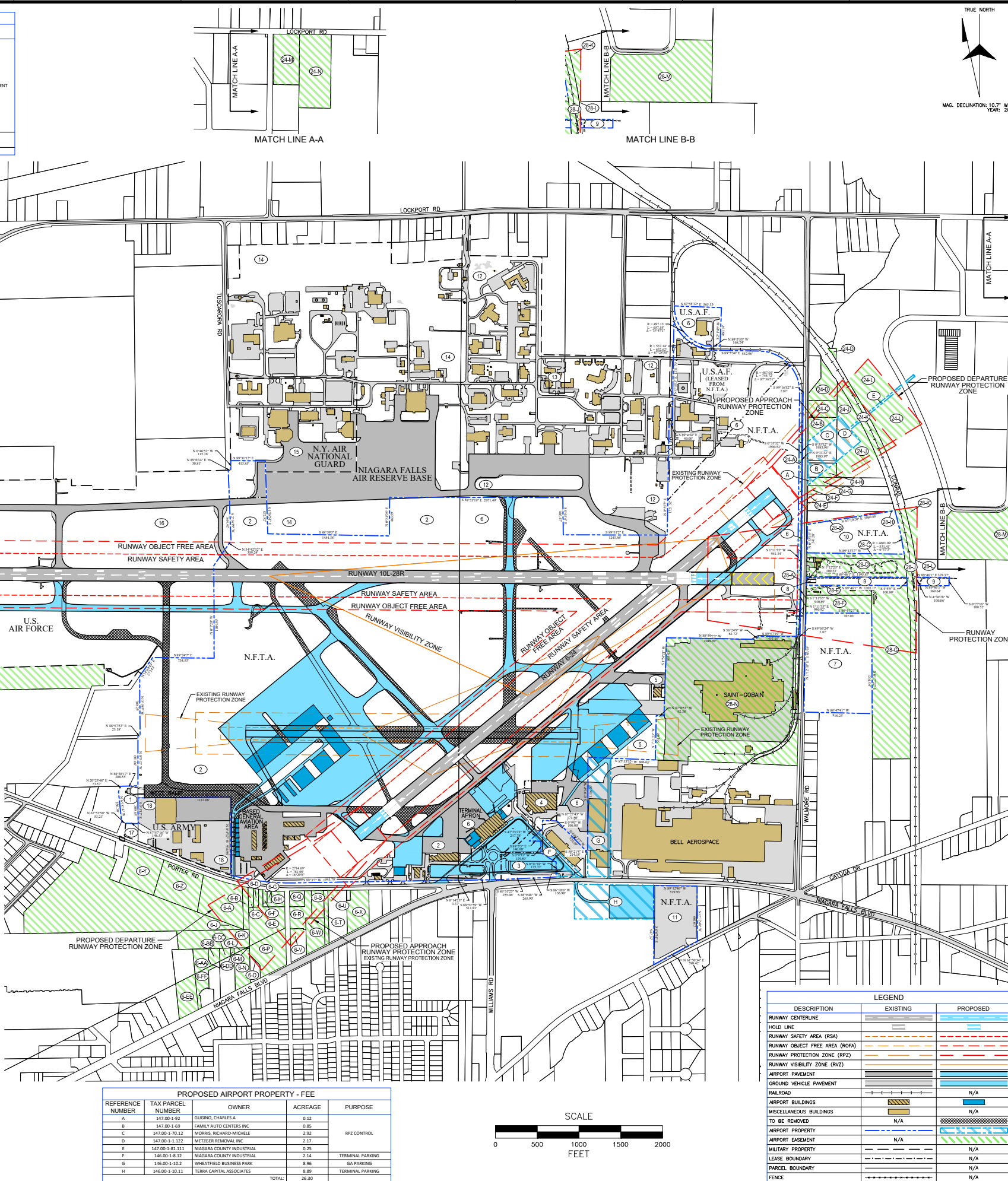
REFERENCE NUMBER	TAX PARCEL NUMBER	OWNER	ACREAGE
12	146.00-1-22	USA AIR BASE	134.90
13	146.00-1-12	NAVY PUBLIC WORKCENTER	2.60
14	146.00-1-2	U.S. GOVT	360.52
15	146.00-1-1	NEW YORK STATE NATL AIR	36.30
16	146.10-1-1	U.S. GOVT	248.00
17	146.14-1-8	U.S. GOVT	0.83
18	146.14-1-10	U.S. GOVERNMENT	18.80
TOTAL:			602.55

REFERENCE NUMBER	TAX PARCEL NUMBER	OWNER	ACREAGE	PURPOSE
RUNWAY 10L				
10-A	145.08-4-12	MARSH, PAMELA M	1.80	
10-B	145.08-4-14	WEBER, THOMAS R	0.30	
10-C	145.08-4-15	WEBER, THOMAS R	1.80	
10-D	145.08-4-16	FRANZ, GAIL	1.70	
10-E	145.08-4-18	CANELLA, JAMES	4.50	
10-F	146.05-1-2	BUCK, SAMUEL L	4.60	
10-G	145.08-4-1	GRAY, TIMOTHY	1.10	
10-H	145.08-4-2	SCALZO, ANGELO-AUICE	0.57	
10-I	145.08-4-3	SCALZO, ALEX	0.38	
10-J	145.08-4-4	HUTCHINS, LEASON J	0.89	
10-K	145.08-4-5	LUM, DANIEL P	1.05	
10-L	145.08-4-8	CADWALLADER, LLOYD	1.19	
10-M	145.08-4-9	ORFEL, JOHN	1.30	
10-N	145.08-4-10	CONRO, JOSEPH	1.40	
10-O	145.08-4-11	MARSH, PAMELA M	1.60	
10-P	145.08-4-12	MARSH, PAMELA M	1.70	
10-Q	145.08-4-13	MARSH, PAMELA M	1.70	
10-R	145.08-4-14	MARSH, PAMELA M	1.70	
10-S	145.08-4-15	MARSH, PAMELA M	1.60	
10-T	145.08-4-16	MARSH, PAMELA M	1.60	
10-U	145.08-4-17	MARSH, PAMELA M	1.60	
10-V	145.12-2-6.2	BUFF SOCIAL CLUB INC	1.17	
10-W	146.18-1-8	TALABRO, VICTOR	31.72	
10-X	145.12-3-3	COOK, TAWANNA	0.44	
10-Y	145.11-2-7	MURAWSKI, LOUANN	1.20	
10-Z	145.08-1-25.1	JANISE, TODD	1.00	
10-AA	145.08-1-27	CENTER INVESTMENTS	1.00	
10-AB	145.08-1-28	SIRANNI, VINCENT P SR	1.60	
10-AC	145.08-1-29	SCALZO, JONATHAN	1.60	
10-AD	145.08-1-30	MARSH, PAMELA M	1.60	
10-AE	145.11-2-16	VILLANOVA, VICKI	0.89	
10-AF	145.11-2-17	TUTTLE, RONALD	0.86	
10-AG	145.11-2-18	SYKES, CYNTHIA	0.83	
10-AH	145.08-1-24	JANISE, TODD A	0.38	
10-AI	145.08-1-25	LAURENCE, JONNE	0.40	
10-AJ	145.08-1-26	MATTHEWS, JOHN E	0.28	
10-AK	145.08-1-27	HARRY, RONALD E	1.30	
10-AL	145.07-4-62	PASSE, STEPHEN L	0.98	
10-AM	145.07-4-61	LUCICCHI, MICHAEL	0.90	
10-AN	145.07-4-60	BLONDI, HERBERT	0.83	
10-AO	145.07-4-59	EVNARD, ROBERT E	1.19	
10-AP	145.08-1-14	TIMM, ROBERT E	0.40	
10-AQ	145.08-1-15	FITTMAN, TAMM	0.40	
10-AR	145.07-4-55	FOURNER, STEVEN	0.66	
10-AS	145.07-4-56	RIZZO, PETER	0.27	
RUNWAY 28R				
28-A	146.00-1-10.2	WHEATFIELD BUSINESS PARK	1.22	
28-B	147.00-1-1.21	SAEL WILSON ROAD LLC	0.95	
28-C	147.00-1-1.20	NIAGARA COUNTY INDUSTRIAL	1.60	
28-D	147.00-1-1.22	PLAZA MOTORS OF WHEATFIELD INC	0.64	
28-E	147.00-1-1.23	PLAZA MOTORS OF WHEATFIELD INC	2.12	
28-F	147.00-1-1.24	UNITED STATES OF AMERICA	1.85	
28-G	147.00-1-1.25	HOLICK, DAVID	0.90	
28-H	147.00-1-1.26	DOUBLE REALTY OF NY INC	0.02	
28-I	700.00-44.1	NEW YORK CENTRAL LINES LLC	4.09	
28-J	147.00-1-1.28	HARPMAN, ERIC	1.07	
28-K	147.00-1-1.29	MULLIKEN, ROY P. SIZZANO	0.93	
28-L	147.00-1-1.30	LOCKER 93 REALTY CORP	17.90	
28-M	146.00-1-1.2	PATRIOT WHEATFIELD CONDO	55.10	
TOTAL:				88.66

REFERENCE NUMBER	TAX PARCEL NUMBER	OWNER	ACREAGE	PURPOSE
RUNWAY 6				
6-A	146.18-1-39	LOZINA WINTERVOS	5.50	
6-B	146.18-1-40	WEBER, INC. JOSEPH C	0.81	
6-C	146.18-1-1	HOUZER, RUBY	0.33	
6-D	146.18-1-2	ZORTMAN, TRACE	0.31	
6-E	146.18-1-6	FIRST ASSEMBLY OF GOD, INC	3.90	
6-F	146.18-1-3	GRAY, RUTH D	0.18	
6-G	146.18-1-4	LAWRENCE, LINDSAY L	0.15	
6-H	146.18-1-5	MARKEY LUNGE INC	0.70	
6-I	146.18-1-18	WEBER, INC. JOSEPH C	0.40	
6-J	146.18-1-17	WEBER, INC. JOSEPH C	4.40	
6-K	146.18-2-7	GMA PROPERTIES, LLC	0.25	
6-L	146.18-3-3	WEBER JOSEPH C INC	0.02	
6-M	146.18-3-2	GMA PROPERTIES LLC	1.83	
6-N	146.18-3-4	FIRST ASSEMBLY OF GOD A	0.05	
6-O	146.18-3-5	FIRST ASSEMBLY OF GOD INC	3.80	
6-P	146.18-3-7.21	LEWISTON MANAGEMENT GROUP LLC	0.79	
6-Q	146.18-3-7.22	LEWISTON MANAGEMENT GROUP LLC	1.70	
6-R	146.18-3-7.23	LA DUCA ANGELO F & B	1.10	
6-S	146.18-3-8	PHIL KERN COOP	0.82	
6-T	146.18-3-9	UNITED STATES POSTAL	0.30	
6-U	146.18-3-6	PATEL VISHAL & PATEL SANKEET	0.46	
6-V	146.18-3-8	KASPER VICTORIA	1.94	
6-W	146.18-3-11	PANSHER KEAR'S	2.80	
6-X	146.18-1-37.1	JURON, RICHARD G	4.90	
6-Y	146.18-1-38	LOZINA, GEORGE ROBERT	5.50	
6-Z	146.18-2-3	ARMSTRONG, INC	1.20	
6-AA	146.18-2-4	9524 NIAGARA FALLS BLVD LLC	0.47	
6-AB	146.18-2-5	9524 NIAGARA FALLS BLVD LLC	0.52	
6-AC	146.18-2-6	9524 NIAGARA FALLS BLVD LLC	0.09	
6-AD	161.06-1-12	MIR HOSPITALITY LLC	2.33	
6-AE	161.06-1-13	ARMSTRONG, INC	0.89	
RUNWAY 24				
24-A	146.00-1-10.2	WHEATFIELD BUSINESS PARK	0.84	
24-B	147.00-1-70.12	MORRIS, RICHARD MICHELLE	1.15	
24-C	147.00-1-70.7	CRAMER BENJAMIN, RICHARD	1.56	
24-D	147.00-1-70.13	JOHNSON, DEAN T JR. PASKALA	2.30	
24-E	147.00-1-90	INDUSTRIAL SERVICES OF NY INC	0.05	
24-F	147.00-1-91	INDUSTRIAL SERVICES OF NY INC	0.39	
24-G	147.00-1-92	GLUGNO, CHARLES A	4.64	
24-H	147.00-1-99	FAMILY AUTO CENTERS INC	0.50	
24-I	147.00-1-122	MEISER REMOVAL INC	0.91	
24-J	147.00-1-132	MEISER REMOVAL INC	0.91	
24-K	700.00-44.1	NEW YORK CENTRAL LINES LLC	2.63	
24-L	147.00-1-81.111	NIAGARA COUNTY INDUSTRIAL	9.27	
24-M	147.00-1-81.112	WHEATFIELD BUSINESS PARK	8.96	
24-N	147.00-1-5.1	JAFFE, BRENDA WALCK	7.00	
TOTAL:				308.66

REFERENCE NUMBER	TAX PARCEL NUMBER	OWNER	ACREAGE	PURPOSE
A	147.00-1-92	GUGINO, CHARLES A	0.12	
B	147.00-1-69	FAMILY AUTO CENTERS INC	0.85	
C	147.00-1-70.12	MORRIS, RICHARD MICHELLE	2.92	
D	147.00-1-122	MEISER REMOVAL INC	2.17	
E	147.00-1-81.111	NIAGARA COUNTY INDUSTRIAL	0.25	
F	146.00-1-8.12	NIAGARA COUNTY INDUSTRIAL	2.34	TERMINAL PARKING
G	146.00-1-10.2	WHEATFIELD BUSINESS PARK	0.96	GA PARKING
H	146.00-1-10.11	TERRA CAPITAL ASSOCIATES	8.89	TERMINAL PARKING
TOTAL:				26.30

NOTES:
 • ALL POSITIONAL DATA REFERENCES: NORTH AMERICAN DATUM OF 1983 (NAD83)
 • NORTH AMERICAN VERTICAL DATUM OF 1988 (NGVD88)
 • AERIAL MAPPING OBTAINED FROM AEROMETRIC DATED 2012.
 • PROPERTY BOUNDARIES BASED ON PROVIDED GIS PARCEL DATA FROM COUNTY OF NIAGARA.
 • NO PROPERTY SURVEY PERFORMED FOR THIS PROJECT.



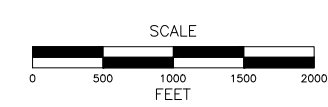
NFTA
 Niagara Frontier
 Transportation Authority
 Serving Buffalo Niagara

NIAGARA FALLS INTERNATIONAL AIRPORT
 SUSTAINABLE AIRPORT MASTER PLAN

MARK	DATE	DESCRIPTION
ISSUE:		
NFTA PROJECT NO:	31NG1203	
DESIGNER PROJECT NO:	17828.00	
CAD DWG FILE:	CT117.dwg	
DRAWN BY:	RGT	
CHECKED BY:	RLI	
SCALE:	AS NOTED	
COPYRIGHT:		

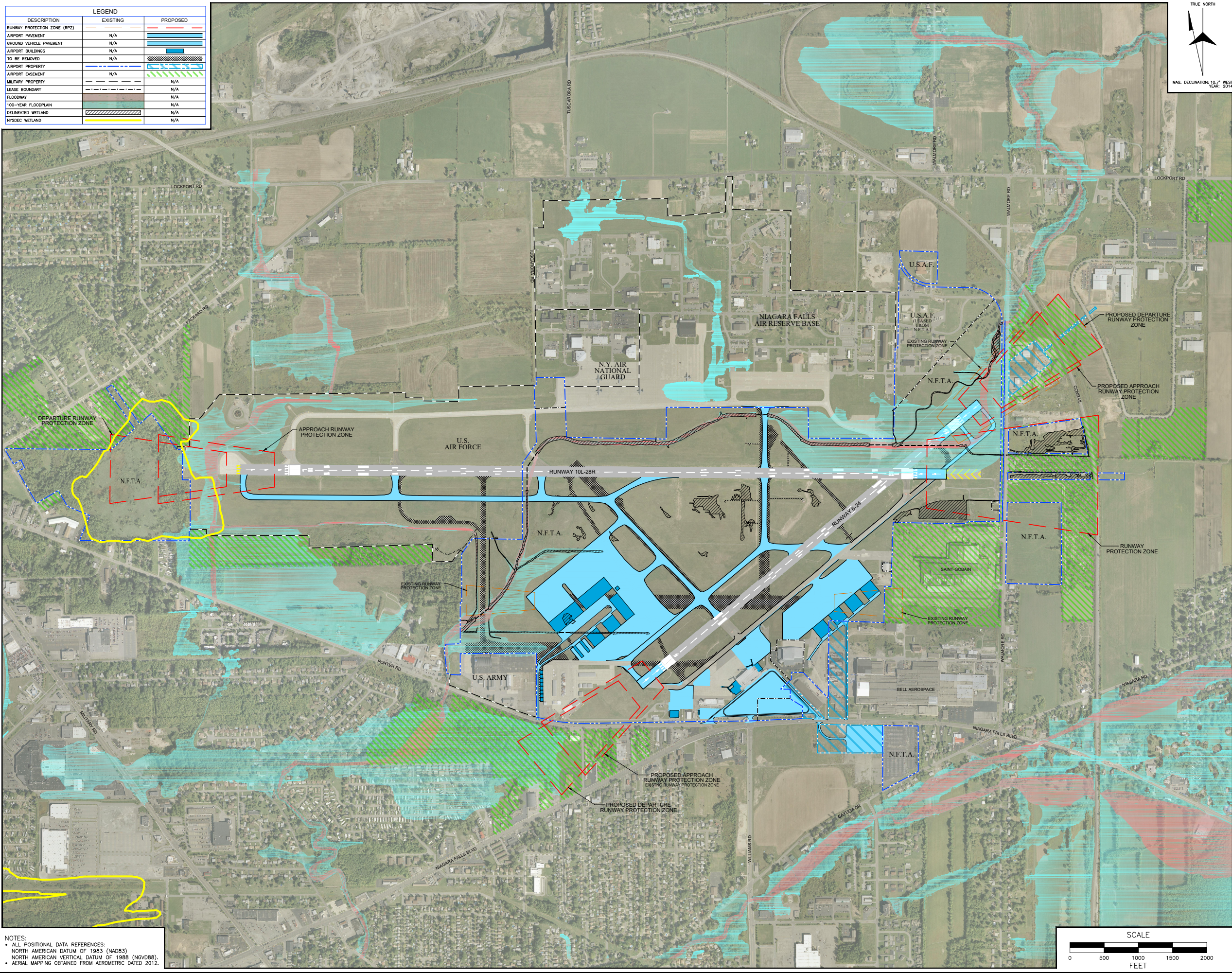
SHEET TITLE
AIRPORT PROPERTY MAP EXHIBIT "A"
 DRAWING#
CT117
 SHEET# 17 OF 18

DESCRIPTION	LEGEND	
	EXISTING	PROPOSED
RUNWAY CENTERLINE	[Symbol]	[Symbol]
HOLD LINE	[Symbol]	[Symbol]
RUNWAY SAFETY AREA (RSA)	[Symbol]	[Symbol]
RUNWAY OBJECT FREE AREA (ROFA)	[Symbol]	[Symbol]
RUNWAY PROTECTION ZONE (RPZ)	[Symbol]	[Symbol]
RUNWAY VISIBILITY ZONE (RVZ)	[Symbol]	[Symbol]
AIRPORT PAVEMENT	[Symbol]	[Symbol]
GROUND VEHICLE PAVEMENT	[Symbol]	[Symbol]
RAILROAD	[Symbol]	N/A
AIRPORT BUILDINGS	[Symbol]	[Symbol]
MISCELLANEOUS BUILDINGS	[Symbol]	[Symbol]
TO BE REMOVED	N/A	[Symbol]
AIRPORT PROPERTY	[Symbol]	[Symbol]
AIRPORT EASEMENT	N/A	[Symbol]
MILITARY PROPERTY	[Symbol]	N/A
LEASE BOUNDARY	[Symbol]	N/A
PARCEL BOUNDARY	[Symbol]	N/A
FENCE	[Symbol]	N/A



I:\NFTA\17828.00.dwg mpa (View\Drawings\AutoCAD) (mfarland) (11/17/14)

LEGEND		
DESCRIPTION	EXISTING	PROPOSED
RUNWAY PROTECTION ZONE (RPZ)		
AIRPORT PAVEMENT	N/A	
GROUND VEHICLE PAVEMENT	N/A	
AIRPORT BUILDINGS	N/A	
TO BE REMOVED	N/A	
AIRPORT PROPERTY		
AIRPORT EASEMENT	N/A	
MILITARY PROPERTY		N/A
LEASE BOUNDARY		N/A
FLOODWAY		N/A
100-YEAR FLOODPLAIN		N/A
DELINEATED WETLAND		N/A
NYSDEC WETLAND		N/A



NOTES:
 • ALL POSITIONAL DATA REFERENCES:
 NORTH AMERICAN DATUM OF 1983 (NAD83)
 NORTH AMERICAN VERTICAL DATUM OF 1988 (NGVD88)
 • AERIAL MAPPING OBTAINED FROM AEROMETRIC DATED 2012.

TRUE NORTH
 MAG. DECLINATION: 10.7° WEST
 YEAR: 2014



NFTA
 Niagara Frontier
 Transportation Authority
 Serving Buffalo Niagara

NIAGARA
 FALLS INTERNATIONAL
 AIRPORT

SUSTAINABLE AIRPORT
 MASTER PLAN

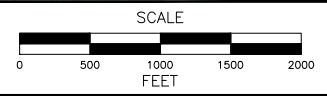
MARK	DATE	DESCRIPTION
ISSUE:		
NFTA PROJECT NO:	31NG1203	
DESIGNER PROJECT NO:	17828.00	
CAD DWG FILE:	CT118.dwg	
DRAWN BY:	RGT	
CHECKED BY:	RLL	
SCALE:	AS NOTED	
COPYRIGHT:		

SHEET TITLE

AIRPORT
 ENVIRONMENTAL
 INVENTORY MAP

DRAWING#
CT118

SHEET#
 18 OF 18



I:\NFTA\17828_00.dwg mpa\Draw\Drawings\AeroCAD\enviro\env\CT118.dwg